

Amenities

- On-Site Maintenance
- Swimming Pool & Clubhouse
- Exercise Facility (24/7 Access)
- Tanning Beds (24/7 Access)
- Large Yards for Pets and Playing
- Outdoor Pet Stations
- Stainless Steel Appliances
- Custom Antique White Glazed Cabinetry Throughout
- Large Open Floorplans
- Washer & Dryer hookups in Each Unit
- Additional Laundry Room in Clubhouse
- Walk-in Closets in Bedrooms
- Private Patios (1st Floor) & Balconies (2nd Floor), Both with Storage

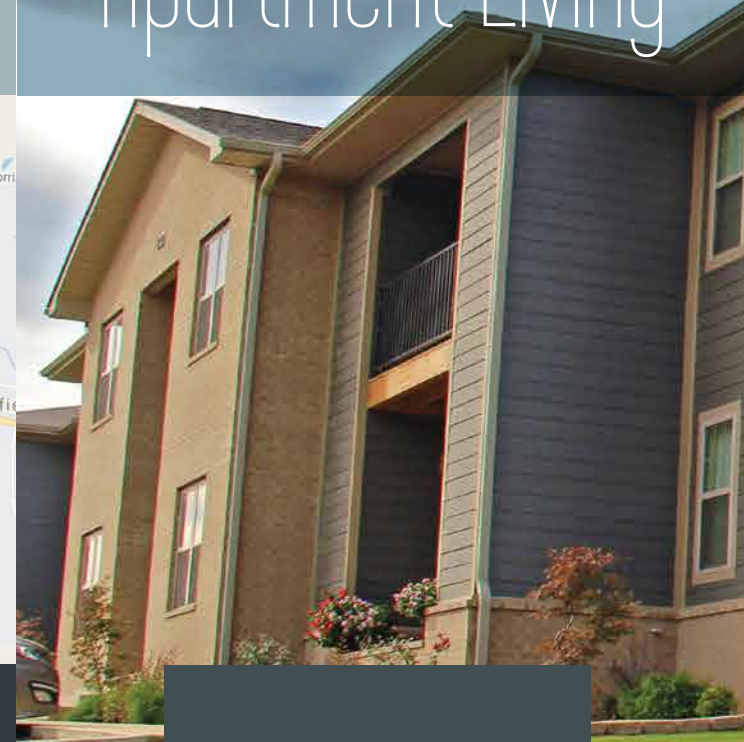
CONTACT US

4323 HARRISON STREET
BATESVILLE, AR. 72501

OFFICE HOURS:
MON-FRI 8AM-5PM



Batesville's Premier Apartment Living



TEL: 870-698-1823
EMAIL:
THEBATESVILLELANDING
@YAHOO.COM

WWW.BATESVILLELANDING.COM



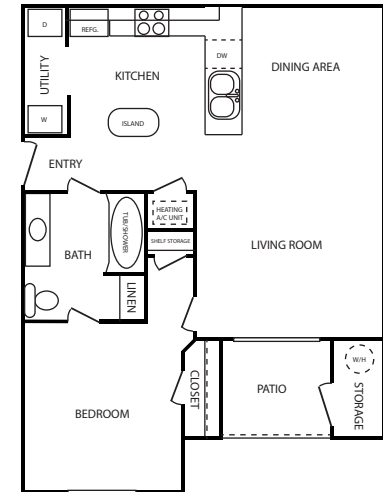
Welcome Home

Make your home with us at The Batesville Landing. With one, two, and three bedroom floor plans, we have options to fit all your needs. Apartment features include stainless steel appliances, balconies and patios with storage, and gracious open designs. Located on the east side of Batesville, Arkansas, you have the necessities of the city just a few minutes away. In addition, you have the beautiful Ozark mountains in your back yard. Call us **today** to schedule a tour or download an application and make The Batesville Landing your new home!

Floor Plans

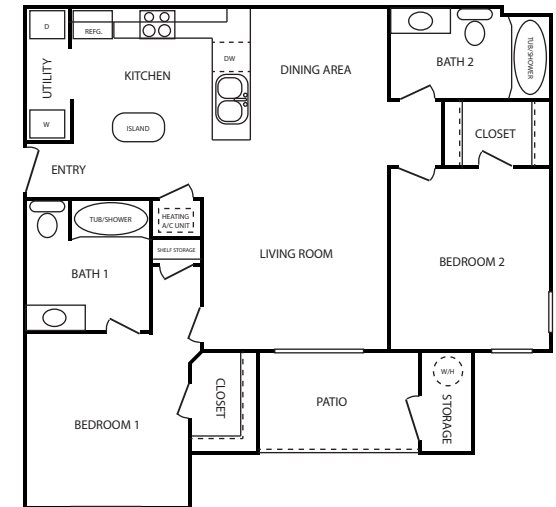
ONE BEDROOM / ONE BATH - 825 SQ FT

- ONE YEAR LEASE: \$600/MO
- SIX MONTH LEASE: \$650/MO
- MONTH-TO-MONTH LEASE: \$700/MO
- DEPOSIT: SAME AS LEASE TERM
- PET DEPOSIT: \$500 FIRST PET, \$250 SECOND PET (TWO PET MAXIMUM, 30 LB. WEIGHT LIMIT)



TWO BEDROOM / TWO BATH - 1,000 SQ FT

- ONE YEAR LEASE: \$700/MO
- SIX MONTH LEASE: \$750/MO
- MONTH-TO-MONTH LEASE: \$800/MO
- DEPOSIT: SAME AS LEASE TERM
- PET DEPOSIT: \$500 FIRST PET, \$250 SECOND PET (TWO PET MAXIMUM, 30 LB. WEIGHT LIMIT)



THREE BEDROOM / TWO BATH - 1,206 SQ FT

- ONE YEAR LEASE: \$700/MO
- SIX MONTH LEASE: \$750/MO
- MONTH-TO-MONTH LEASE: \$800/MO
- DEPOSIT: SAME AS LEASE TERM
- PET DEPOSIT: \$500 FIRST PET, \$250 SECOND PET (TWO PET MAXIMUM, 30 LB. WEIGHT LIMIT)

